



GMT MONTHLY MEMBERSHIP PROGRESS REPORT

Results as of: 5/31/2020

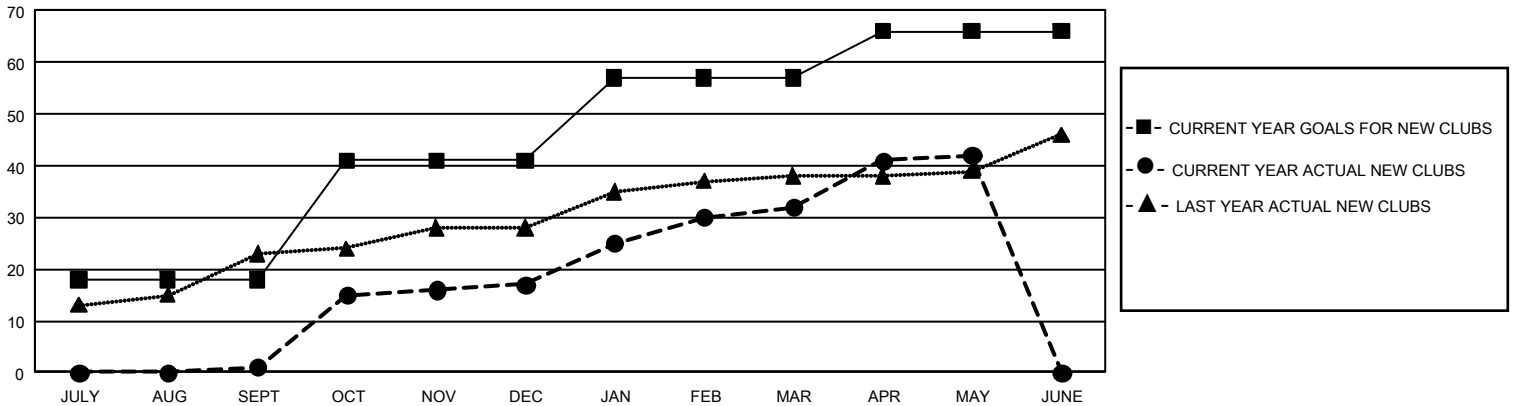
GMT Constitutional Area 8, Group B

GMT: OPEN

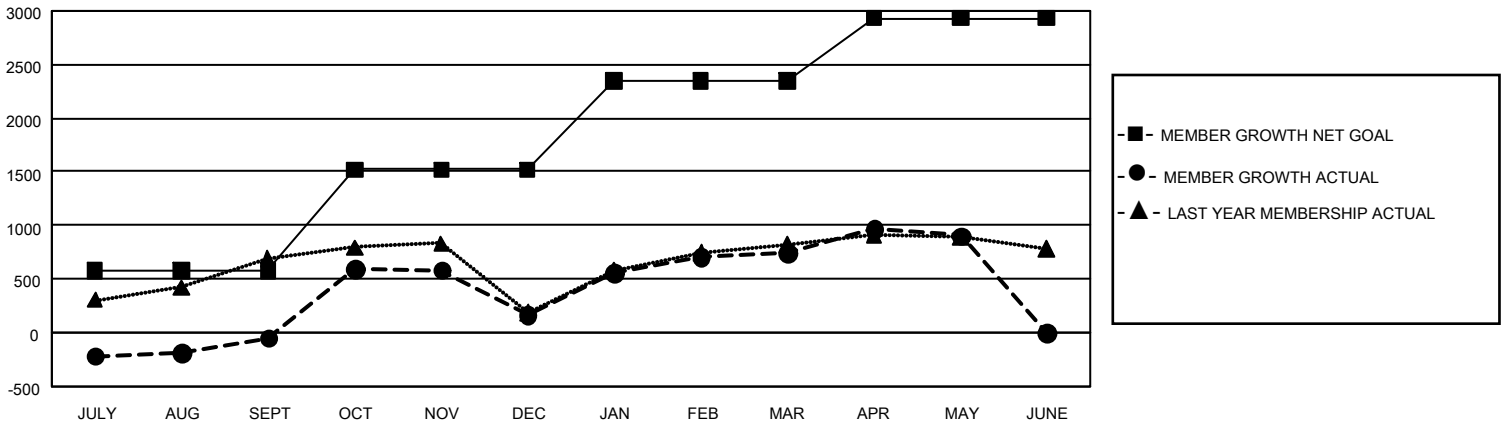
REPORT DOES NOT INCLUDE CLUBS IN UNDISTRICTED AREAS.

Clubs				Members			
RESULTS FOR 2019-2020				RESULTS FOR 2019-2020			
QUARTER	NEW CLUB GOAL	NEW CLUBS	DROPPED CLUBS	QUARTER	MEMBER GROWTH NET GOAL	MEMBER GROWTH ACTUAL	DROPPED MEMBERS ACTUAL (including transfers)
JULY/AUG/SEPT	54	1	4	JULY/AUG/SEPT	1,725	440	466
OCT/NOV/DEC	69	16	16	OCT/NOV/DEC	2,835	1,041	781
JAN/FEB/MAR	48	15	1	JAN/FEB/MAR	2,475	839	198
APR/MAY/JUNE	27	10	0	APR/MAY/JUNE	1,755	428	197

GOALS AND ACTUAL NEW CLUBS CUMULATIVE



GOALS AND ACTUAL MEMBERS CUMULATIVE



DROPPED CLUBS: 21	331 CLUBS OF 515 ADDED 1 OR MORE NEW MEMBERS	<u>GENDER DISTRIBUTION</u> MALE 7,375 (58.19%) FEMALE 5,298 (41.81%)
<u>DROPPED MEMBERS</u> DECEASED 40 CLUB CANCELLED 299 OTHER 1,303 <hr/> TOTAL 1,642	CLICK HERE FOR CUMULATIVE MEMBERSHIP DATA	TOTAL FAMILY UNIT MEMBERS 1,577 FAMILY MEMBERS PAYING HALF DUES 997